

Rutland Windsor Supervisory Union Ludlow Elementary School District Mount Holly Elementary School District Plymouth School District Union #39 School District	<b>STUDENT ATTENDANCE</b>	<b>Policy: F25</b>
---	---------------------------	--------------------

### **Policy**

It is the policy of the Rutland Windsor Supervisory Union, Ludlow Elementary School District, Mount Holly Elementary School District, Plymouth School District and Union #39 School District (hereinafter “District”) to set high expectations for consistent student school attendance in accordance with Vermont law in order to facilitate and enhance student learning.

### **I. Background**

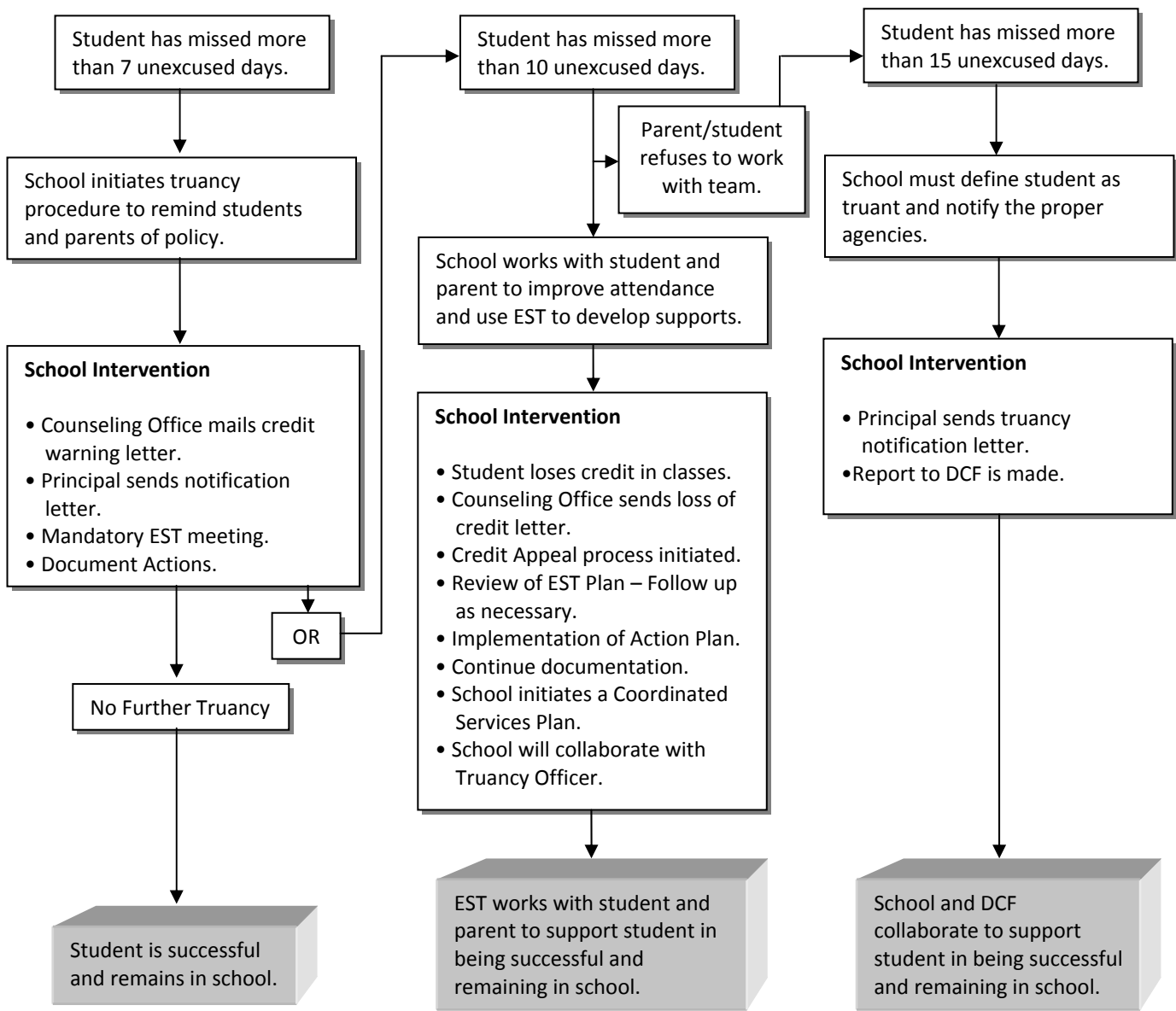
Vermont law requires school attendance for students between the ages of six and sixteen so that a student may complete a course of study that will facilitate the transition to the responsibilities of adulthood. The district believes consistent attendance is a prerequisite for assuring the academic, social and emotional growth of students. In addition, regular and punctual attendance is important to the development of responsible and effective work/study habits as well as a demonstration that students are assuming responsibility for their own behavior. Encouraging students to take full advantage of their education is a shared responsibility of students, families, schools and communities.

### **II. Definitions**

- A. A **Truant** student is one who is subject to compulsory school attendance (16 V.S.A. 1121, Act 44, Section 46) and who is absent without valid cause or excuse.
- B. **Valid causes** for absences include illness, observance of a religious holiday, death in the family, family emergency, situations beyond the student’s control as determined by the School Board or designee, or other circumstances which cause reasonable concern to the parent or guardian for the health or safety of the student and are confirmed in writing or verbally by the parent or guardian of the student.

The school districts shall follow the procedure attached to this policy. The Principal is responsible for maintaining accurate and up-to-date records of student attendance. The Principal is also responsible for assuring the school has the appropriate family information that allows the school to contact parent(s) or guardian(s) of all students whenever necessary.

## Truancy Procedure:



**Legal References:** 16 V.S.A. §§ 121 et seq. (Attendance Required)

Vermont State Board of Education Manual of Rules and Practices: §2120.8.3.3

District:	Reviewed only	Date Warned	Date Adopted	Replaces Policy
Rutland Windsor Supervisory Union			August 24, 2011	<b>F25</b>
Ludlow Elementary School District		April 25, 2011	May 4, 2011	<b>JN</b>
Mount Holly Elementary School District		April 25, 2011	May 4, 2011	<b>F25</b>
Plymouth School District		Not found	n/a	
Union #39 School District		April 25, 2011	May 4, 2011	<b>JX</b>